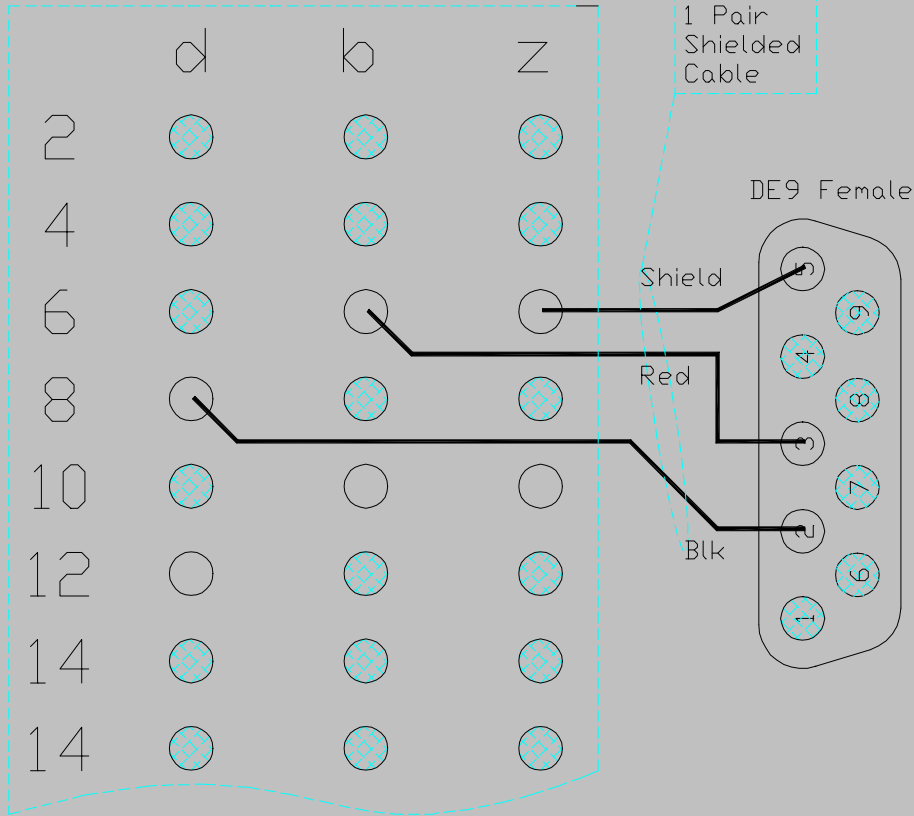


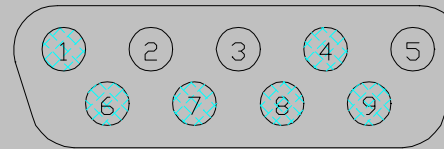
ICM-4020  
DIN-48M Field Connector Pinout  
(Rear View, Looking at Male Pins)

	d	b	Z
2	V-Sync	Ground (V-Sync)	V-Sync
4	+ MP Network	Shield MP Network	- MP Network
6	Clear to Send In Port 2	Receive Data In Port 2	Ground Port 2
8	Transmit Data Out Port 2	Request to Send Out Port 2	DSR / +12 /DTR Port 2
10	Clear to Send In Port 3	Receive Data In Port 3	Ground Port 3
12	Transmit Data Out Port 3	Request to Send Out Port 3	DSR / +12 /DTR Port 3
14	Clear to Send In Port 1	Receive Data In Port 1	Ground Port 1
14	Transmit Data Out Port 1	Request to Send Out Port 1	DSR / +12 /DTR Port 1

Din 48 Female Field Connector



Allen Bradley SLC 500  
DE9M Channel 0 Connector Pinout  
(Looking at Male Pins)



1	DCD	Input	Data Carrier Detect
2	RXD	Input	Received Data
3	TXD	Output	Transmitted Data
4	DTR	Output	Data Terminal Ready
5	COM	Shared	Common Return (signal ground)
6	DSR	Input	Data Set Ready
7	RTS	Output	Request to Send
8	CTS	Input	Clear to Send
9	NC	Input	No Connection

REVISIONS				
REV	DESCRIPTION	BY	APPR	DATE
0	INITIAL RELEASE	LG		12-17-98

Media Pro 4000, ICM-4020 Example Configuration  
Port2:

Port Type: DF1 Port (SLC500)  
BaudRate: 19200  
Parity: None  
Data Bits: 8  
Stop Bits: 1

Data to PLC: 600  
Qty: 2  
Plc File: B19:0

Data From PLC: 600  
Qty: 2  
PLC File: B19:8

PLC Address: 0  
ICM Address: 0

This Example Configuration Transfers Values  
from @o600 (data to PLC), 2 bytes (Qty), to B19:0 (PLC file).

And

from B19:8 (PLC file), 2 Bytes (Qty), to @i600 (data from PLC).

Bits:  
@o600.0 through @o600.7 -----> B19:0/00 through B19:0/07  
@o601.0 through @o601.7 -----> B19:0/10 through B19:0/17

B19:8/00 through B19:8/07 -----> @i600.0 through @i600.7  
B19:8/10 through B19:8/17 -----> @i601.00 through @i601.7

A-B SLC 500 Example Configuration  
Channel 0 - System:

Source Id: 0  
Driver: DF1 Full Duplex  
Baud: 19200  
Parity None  
Stop Bits: 1

Control Line: No handshaking  
Error Detection: BCC  
Embedded Responses: Enabled  
Duplicated Packet Detect:   
ACK Timeout (x20 ms): 50  
NAK Retries: 1  
ENQ Retries: 1

NOTES: UNLESS OTHERWISE SPECIFIED  
DO NOT SCALE DRAWING

QTY. PER ASSY.	ITEM NO.	PART NUMBER	CONTROL NO.	DESCRIPTION	REF. DES.																														
1	1			Schematic Diagram / Application Note, Media Pro 4000 ICM-4020, to A-B SLC 500 PLC, DF1 Communications																															
<table border="1"> <tr> <td>SCALE</td> <td>None</td> <td>SHEET SIZE</td> <td>D</td> <td>DATE</td> <td>12-17-98</td> </tr> <tr> <td>DWG. TITLE</td> <td colspan="5">Media Pro 4000 Application Note</td> </tr> <tr> <td>DWG. NO.</td> <td colspan="5">SD - 11084</td> </tr> <tr> <td>CONTR. NO.</td> <td colspan="5"></td> </tr> <tr> <td>SHEET</td> <td>1</td> <td>OF</td> <td>1</td> <td>REV.</td> <td>0</td> </tr> </table>						SCALE	None	SHEET SIZE	D	DATE	12-17-98	DWG. TITLE	Media Pro 4000 Application Note					DWG. NO.	SD - 11084					CONTR. NO.						SHEET	1	OF	1	REV.	0
SCALE	None	SHEET SIZE	D	DATE	12-17-98																														
DWG. TITLE	Media Pro 4000 Application Note																																		
DWG. NO.	SD - 11084																																		
CONTR. NO.																																			
SHEET	1	OF	1	REV.	0																														
MATERIAL		FINISH		<p>NOTICE</p> <p>The data in this document incorporates proprietary rights of ANITECH SYSTEMS INC.</p> <p>25021 ANZA DR. VALENCIA, CA. 91355</p> <p>No part of this document may be reproduced or transmitted in any form or by any means, without the consent of ANITECH SYSTEMS INC.</p> <p>ANITECH SYSTEMS, INC. 2002 ANZA DR. VALENCIA, CA. 91355 (800) 297-2184</p>																															

REV: 0  
DWG. NO. SD - 11084