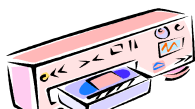




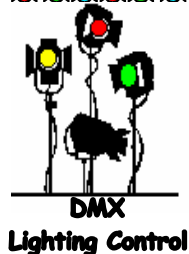
HMT-4010



**Total
Show Control**



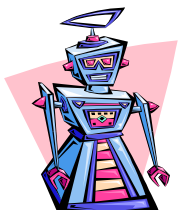
**Video
Playback**



**DMX
Lighting Control**



**Video & SMPTE
Time Code
Gen/Rcvr**



**Animatronics
Control**



**Digital Audio
Playback
& Control**

Media Pro[®] 4000

HMT-4010 Handheld Maintenance Terminal

The Handheld Maintenance Terminal (HMT) can be connected to the front panel of Media Pro[®] ICM Module to provide access to system information, status, and control services that would otherwise require hundreds of switches and indicators. By means of the MP Network, the HMT provides access to every resource in the system. The menu system, that is supported by firmware, makes the HMT a "Virtual" display and control panel for the entire Media Pro[®] Network.

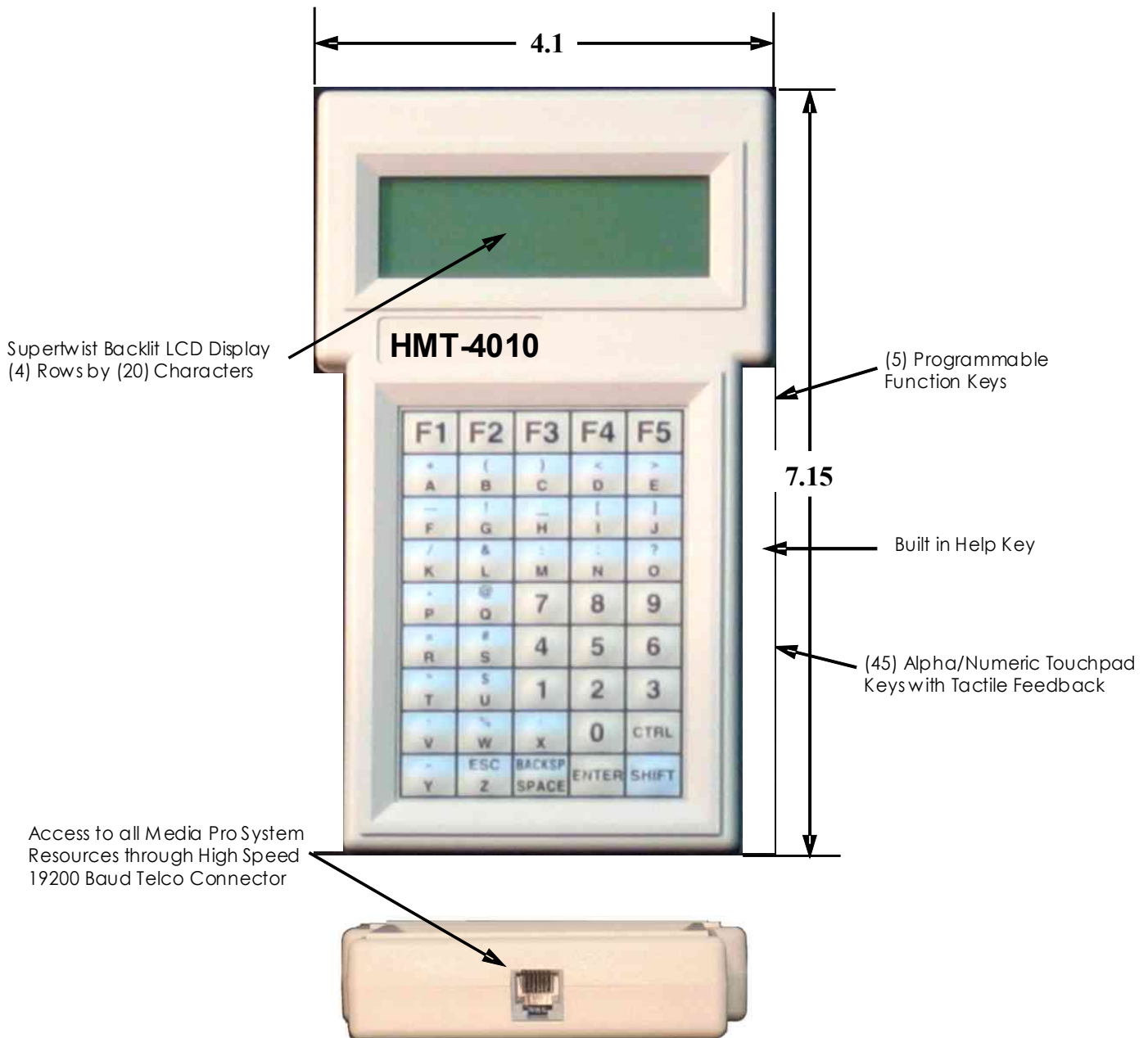
Standard HMT-4010 Features

- ◆ (45) Touchpad Keys with Tactile Feedback
- ◆ (4) Rows by (20) Characters Supertwist Backlit LCD Display
- ◆ (5) Programmable Function Keys
- ◆ 1000 Feet Usable Distance
- ◆ Password Protected
- ◆ User Selectable Communications Parameters
- ◆ High Speed 19200 Baud Rate
- ◆ Access to all Media Pro[®] System Resources, Show Status and Maintenance Information
- ◆ Built in Help Key



HMT-4010

Media Pro® 4000 HMT-4010 Handheld Maintenance Terminal



Complete documentation is available for downloading at our Web site or by contacting our offices.